

COVER ART: MASK AUCTION

WOMEN & THEIR WORK



womenandtheirwork.org



Cover Art

September 14th - 28th, 2020

After an exhaustive search for a permanent home which included 32 buildings (and spanned 28 months), 16 Zoom parties (to pay for it), and (despite) 1 global pandemic, Women & Their Work purchased **1311 East César Chavez Street in Austin** in July 2020 with the support from over 100 individuals (these unprecedented times notwithstanding). This glorious property includes a main building with high ceilings and an open, flexible floor plan perfect for contemporary art in all its forms. An additional structure on the property will also allow for multiple uses, and the courtyard provides even more program opportunities.

Cover Art is a playful and timely themed auction of artist-designed masks created to help Women & Their Work raise the last \$250,000 needed to renovate and move into its permanent home. W&TW teamed up with some of the best contemporary artists and creatives across the country to create art masks for **Cover Art**.

Although not all of the masks are wearable, they are all works of art. Whether it's hung on a wall or put on a face, these art masks are unique works that show support for W&TW. Every dollar raised through the Cover Art mask auction directly supports the building fund.



Ana Esteve Llorens, *Untitled (Floating Without Time)*, cotton threads dyed with natural dyes, sewn on canvas, 15" x 5" x 2 1/2"



Alexis Mabry, *Tonight We Ride Ghost Horses*, chicken wire, canvas, faux snakeskin, velvet, oil paint, acrylic paint, quilt batting, thread, 22" x 13" x 14.5"



Laura Garanzuay, *Mum's the word*, satin, grosgrain ribbon, fabric flowers, paper insects, standard adult size

Amy Scofield, *Broken Silence*, mixed media, 6.5" x 5"





Annie Miller, *Braid*, hand-dyed cotton with metallic binding, fits most adults

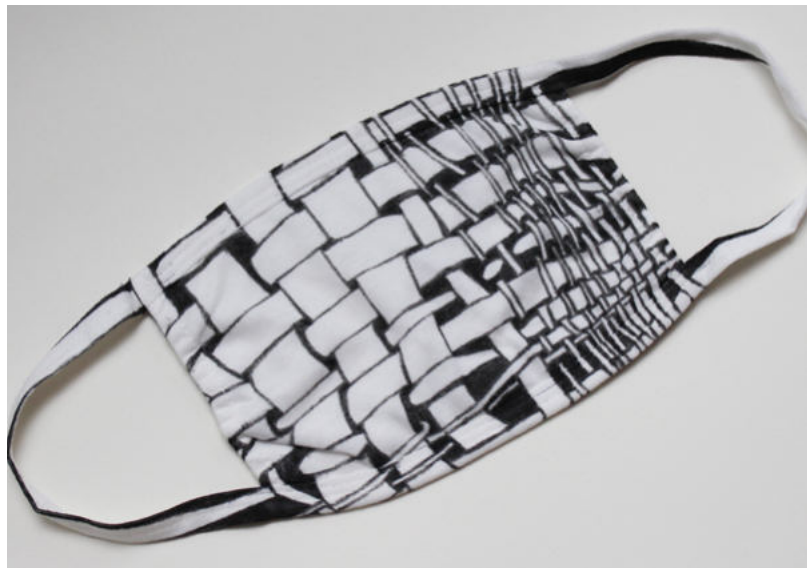


Sarah Greene Reed, *Quarantine Window*, vinyl, wood, plastic, wire, paper & elastic, 9" x 9" x 8"



Steef Crombach, *Tommy*, Athletic Socks, thread, dye, card stock, 17"x 10" x 10"

Hedwige Jacobs, *jointly*, pen and ink on fabric, standard adult size





Rose Stern, *Adult Uni-Sex Light Grey Mask*, cotton, non-woven fabric, copper, dried eucalyptus and lavender leaves, 6" x 4.5" x 2.5"

Mayuko Ono Gray, 後悔先に立たず __ *Regret never comes first*, graphite on paper, 9" x 9"



Sarah Luna, *Breathe...*, hand-embroidered Mulberry Silk, 6 1/2" x 4 1/2"



Heidi Lowell, *Xylem*, embroidery, Adult M



Emily Fleisher, *Fossilized Mask From the Future*, plaster and grout casting, 4" x 4" x 5"



Laura Lit, *Metallic Fringe*, cotton mask, Sharpie, beads, thread, 6.75" x 4.5"



Jenelle Esparza, *I Am A Galaxy*, Japanese blue silk and gold cotton thread on a cotton mask, standard adult size

Bucky Miller, *Hammock for Hoffmann*, cloth mask, natural dye, stick, honey bears, masking tape, pen, screws, 12"x 2"x 12"





Heike Blakley, *Queen Mary*, stitching, standard size



Pat Johnson, *15th century virus*, acrylic, and pen, standard adult size



Leah Rama, *Filtered Out*, cotton, metal beaded chain, melt-blown fiber filter, elastic, adult S/M



Adrienne Hodge, *le nuage*, walnut ink and calligraphy ink on fabric, standard adult size



Rene Lai, *Screening*, ink, green thread on cotton mask, standard adult size



Yulia Lanina, *Prayer*, fabric and thread, standard adult size



Ginger Geyer, *Six Foot Kiss Glazed*, porcelain (2 masks go together), 2" x 6" x 4", & 1 1/2" x 3 1/2" x 4"



Ginger Geyer, *Out of the Mouths of Babes*, paper mask with cutouts from vintage children's books, 1/2" x 7" x 4"



Erika Alonso, *Untitled (Landscape)*, watercolor and ink, small/medium



Preetika Rajgariah, *Imported*, mask and bindis, standard adult size

Shelley Wood, *Transitioning Strength*, LamWood Ranch,
digital image fabric print, standard adult size



Lucy MacQueen, *Under Water*, cotton and nylon,
standard adult size



Carol Hayman, *Flowers*, printed cotton fabric, medium women's



Carrie Cook, *Untitled*, ink pen on an acrylic wash, child sized

Alexandra Robinson, *Viral Load*, cyanotype on muslin, french knots and embroidery stitches, standard adult size



Beili Liu, *Prayer Mask*, cotton flags and silk screen printing, standard adult size



Rose Anderson Lewis, *Golden Breath*, N95 mask, spray paint, standard adult size

Connie Arismendi, *The Lamb*, acrylic paint on cotton, standard adult size





Keva Richardson, *Lovegrass Graphite*, tracing paper, & inkjet print on unprimed canvas, 9" x 12" framed

Kallie Cheves, *The Stretches of My Fingers*, hand-embroidered inkjet photo on Hagaki silk on a cotton mask with inner flaps for removable filters, 8" x 6"



John Mulvany, *Guadalupe River*, Acrylic on gessoed mask, 4.5" X 8"



Katie Maratta, *birds in flight*, ink, standard adult size



Carol Hayman, *Flowers*, printed cotton fabric, medium women's



Jade Walker, *Holding*, fabric, cotton, printed image, 12" X 10" X 4"

Michelle Rahbar, *The Gatekeepers*, acrylic and Yupo on gessoed cotton mask, 7 1/2" x 4 1/2"



Gail Chovan, *In remembrance of things past.*, victorian lace with glass & jet beading, standard adult size

Rosa Nussbaum, *Princess of the Zombie Mice (space regalia)*, foam, diy puffy paint, LEDs, rechargeable lithium ion batteries, 15" x 15" x 10"



Denise Prince, *Decora Vintage*, millinery fruit and forget me nots, diaper pins, plastic barrette, buttons and glass beads, standard adult size



Annie McCall, *Are you listening?*, oil paint and colored pencil on fabric, 6.5"x 4.5" x .125"



Alyssa Taylor Wendt, *Face Merkin*, synthetic hair on mask, standard adult size

Dawn Okoro, *Feeling Free*, ink on mask, standard adult size



Meena Matai, *180 volunteers*, fabric, ribbon, yarn mounted on board, 18" x 20" x 4"

Hallie Rae Ward, *Poppin' Protection with Pride*, Pipe cleaners sewn on to mask, attached on wood foundation, hung on a bracket, 13" x 11" x 6"



Lauren Tarbel, *Rise of the Phoenix for the Coming Age*, Satin floral fabric, raw silk, sequins, glass beads, coral, turquoise stones, tigers eye stone, embroidery thread, and fine silk (bought by my Mother in Law, Karen McGirr, in China over 30 years ago), 13" x 4.5"

Deanna Miesch, *Artic love & om*, fabric, glass beads, velvet
cording, 8 1/4" x 5"



B. T. R. Design Studio, *Together*, cotton linen, rayon,
polyester, one size

Candace Hicks, *I will not leave home?*, hand-embroidered cotton, standard adult size



Connie Arismendi, *In These Streets*, Acrylic on handmade paper, metallic string, ribbon, standard adult size



Heather Sundquist Hall, *So you be good to me and I'll be good to you*, cotton, thread, and ballpoint pen, 6" x 10"



Lucy MacQueen, *Playing Possum*, cotton, 4.5 x 6.5"

Mark Puente, *La Máscara*, ink, pencil, laser cut wood, milk-paint, 12" x 9" x 0.75"



Rosemary Cantu, *Let's get it*, canvas on mask, standard adult size



Valerie Fowler, *Our Hero*, cotton mask, waterproof inks, standard adult size

Rebecca Bennett, *And Still the Blooms Delight*, standard adult size



Rebecca Payne, *I'm Naked Under Here*, acrylic,
standard adult size



Michelle Ellsworth, *Heart Thong/Face Mask with additional
sides of pharmaceutical, art paper and fabric*, standard size

Tobin Levy, *Pins + Needles*, mixed media, standard adult size



Debe Bentley, *Missing Smiles (with Smile Lei)*, mixed media

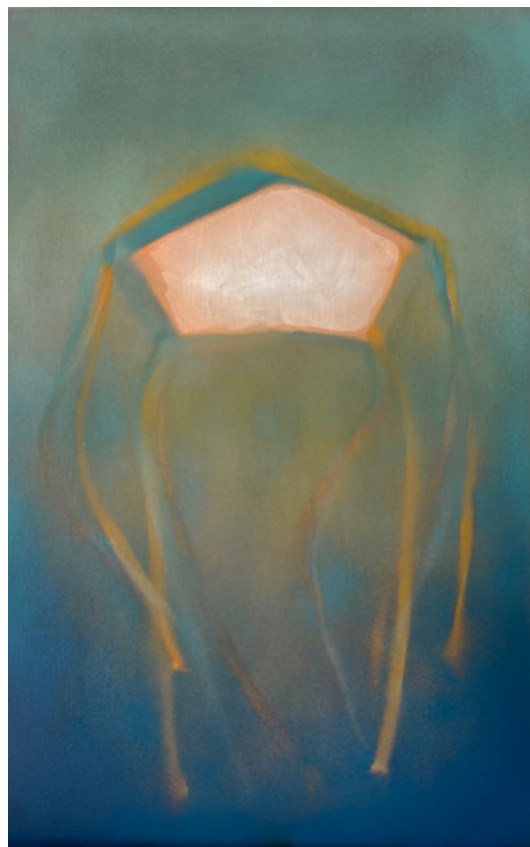
Jessamine Narita, *Secret Garden*, acrylic, standard adult size



Julie Pelaez, *Safe Passage through Covid Waters*, alcohol ink painting strips threaded onto linen canvas, natural wood frame, 12 x 12 x 1.5"



Rebecca Cohen, *Masking the Obvious*, collage including cloth, newsprint, photograph, thread, archival glue, cold wax, 6 1/2" x 4 1/2"

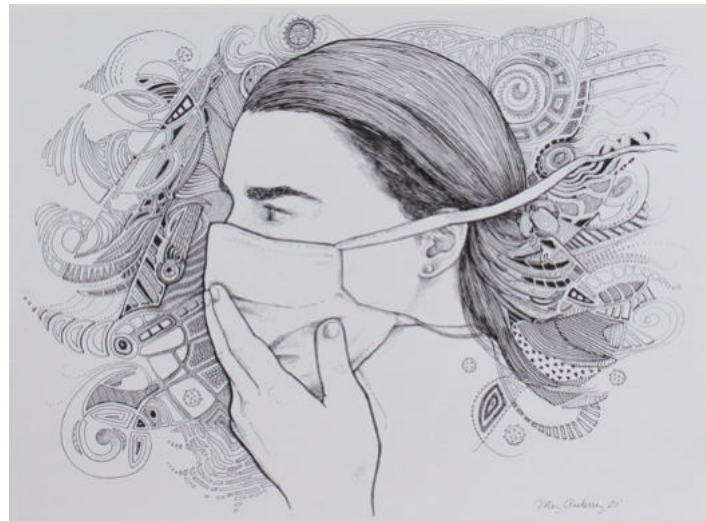


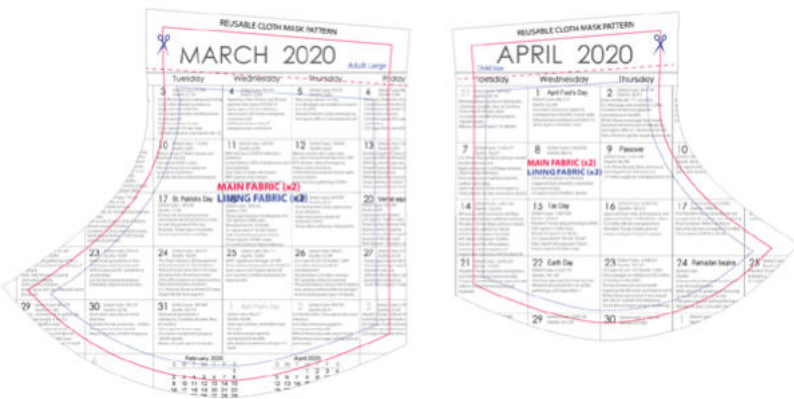
Roi James, *Negative Space*, acrylic and oil on panel, 26" x 16.25"



Jill Bedgood, *Face Shield: Moths*, cast hydrocal plaster, marble dust, and powdered graphite, 6" x 6" x 1"

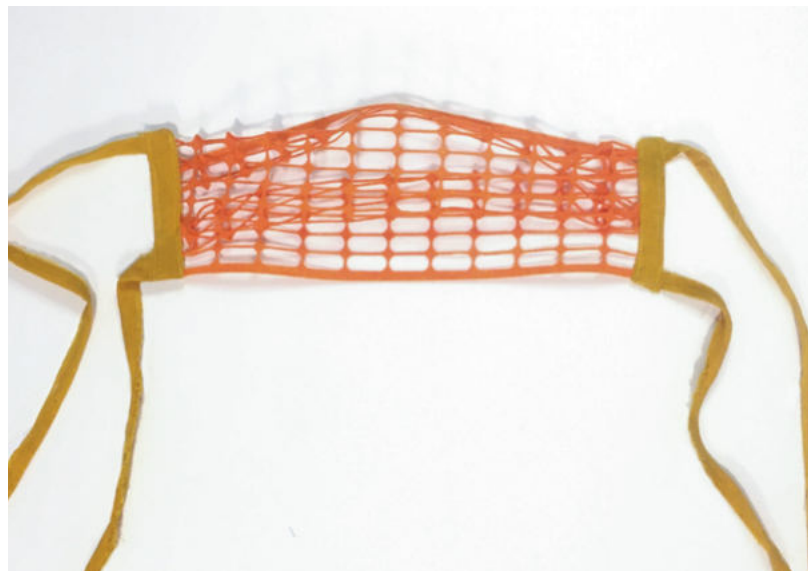
Meg Aubrey, *drawing of a human in a mask*, pen and ink, 9" x 12"





Julie Libersat, *March & April Covid Calendar Reusable Cloth Mask Pattern*, Archival digital print on paper 13" x 19"

Julie Libersat, *Safety Barrier*, laser cut felt, fabric, 7" x 5"





Connie Arismendi, *Beautiful Dreamer*, gossamer Japanese fabric/paper and comes with rose-colored glasses, standard adult size

Virginia Fleck, *Protection and Reflection*, fishing lures, mask, standard adult size





Candace Briceno-Connolly, *Poppy*, felt & thread,
standard adult sized

Tammie Rubin, *Engulfed*, cloth mask, hydrocol,
resin, graphite, gold pigment, 4.5" x 6.5" x 6.5"



Artist Directory

Erika Alonso - 15

Rose Anderson-Lewis - 19

Connie Arismendi - 19, 29, 39

Meg Aubrey - 37

Jill Bedgood - 37

Rebecca Bennett - 32

Debe Bentley - 34

Heike Blakley - 11

Candace Briceno-Connolly - 40

B. T. R. Design Studio - 28

Rosemary Cantu - 31

Kallie Cheves - 20

Gail Chovan - 23

Rebecca Cohen - 36

Carrie Cook - 17

Steeff Crombach - 6

Michelle Ellsworth - 33

Jenelle Esparza - 10

Virginia Fleck - 39

Emily Fleisher - 9

Valerie Fowler - 32

Laura Garanzuay - 4

Ginger Geyer - 14

Heather Sundquist Hall - 30

Carol Hayman - 17, 22

Candace Hicks - 29

Adrienne Hodge - 12

Hedwige Jacobs - 6

Roi James - 36

Pat Johnson - 11

Renee Lai - 13

Yuliya Lanina - 13

Tobin Levy - 34

Julie Liberstat - 38

Laura Lit - 9

Beili Liu - 18

Ana Esteve Llorens - 3

Heidi Lowell - 8

Sarah Luna - 8

Alexis Mabry - 3

Lucy MacQueen - 15

Katie Maratta - 4

Annie McCall - 25

Heather McKinney - 30

Meena Matai - 26

Deanna Miesch - 28

Annie Miller - 5

Bucky Miller - 10

John Mulvany - 21

Jessamine Narita - 35

Rosa Nussbaum - 24

Dawn Okoro - 26

Mayuko Ono Gray - 7

Rebecca Payne - 33

Julie Pelaez - 35

Denise Prince - 24

Mark Puente - 31

Michelle Rahbar - 23

Preetika Rajgariah - 15

Leah Rama - 12

Sarah Green Reed - 5

Keva Richardson - 20

Alexandra Robinson - 18

Tammie Rubin - 40

Amy Scofield - 4

Rose Stern - 7

Lauren Tarbel - 27

Jade Walker - 22

Hallie Rae Ward - 27

Alyssa Taylor Wendt - 25

Shelley Wood - 16